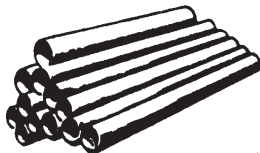


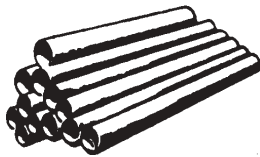
COPPER TUBE



*Lengths of hard
copper - L*



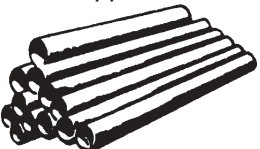
*Coils of soft
copper - L*



*Lengths of hard
copper - M*




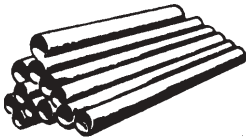
*Coils of soft
copper - K*



*Lengths of hard
copper - K*

Code#	Description	Length	Size
40-0900	Tube L Hard	10 Feet	1/2
40-0905	Tube L Hard	10 Feet	3/4
40-0910	Tube L Hard	10 Feet	1
40-1010	Tube L Hard	20 Feet	1/4
40-1015	Tube L Hard	20 Feet	3/8
40-1020	Tube L Hard	20 Feet	1/2
40-1025	Tube L Hard	20 Feet	3/4
40-1030	Tube L Hard	20 Feet	1
40-1035	Tube L Hard	20 Feet	1-1/4
40-1040	Tube L Hard	20 Feet	1-1/2
40-1045	Tube L Hard	20 Feet	2
40-1055	Tube L Hard	20 Feet	2-1/2
40-1066	Tube L Hard	20 Feet	3
40-1068	Tube L Hard	20 Feet	3-1/2
40-1070	Tube L Hard	20 Feet	4
40-1110	Tube L Soft	60 Feet	1/4
40-1115	Tube L Soft	60 Feet	3/8
40-1120	Tube L Soft	60 Feet	1/2
40-1125	Tube L Soft	60 Feet	3/4
40-1130	Tube L Soft	60 Feet	1
40-1135	Tube L Soft	60 Feet	1-1/4
40-1140	Tube L Soft	60 Feet	1-1/2
40-1205	Tube L Soft	100 Feet	1/4
40-1210	Tube L Soft	100 Feet	3/8
40-1215	Tube L Soft	100 Feet	1/2
40-1220	Tube L Soft	100 Feet	3/4
40-1225	Tube L Soft	100 Feet	1
40-1280	Tube M Hard	10 Feet	1/2
40-1285	Tube M Hard	10 Feet	3/4
40-1290	Tube M Hard	10 Feet	1
40-1315	Tube M Hard	20 Feet	3/8
40-1320	Tube M Hard	20 Feet	1/2
40-1325	Tube M Hard	20 Feet	3/4
40-1330	Tube M Hard	20 Feet	1
40-1335	Tube M Hard	20 Feet	1-1/4
40-1340	Tube M Hard	20 Feet	1-1/2
40-1345	Tube M Hard	20 Feet	2
40-1355	Tube M Hard	20 Feet	2-1/2
40-1360	Tube M Hard	20 Feet	3
40-1375	Tube M Hard	20 Feet	4
40-1415	Tube K Soft	60 Feet	1/4
40-1420	Tube K Soft	60 Feet	3/8
40-1425	Tube K Soft	60 Feet	1/2
40-1430	Tube K Soft	60 Feet	3/4
40-1435	Tube K Soft	60 Feet	1
40-1440	Tube K Soft	60 Feet	1-1/4
40-1445	Tube K Soft	60 Feet	1-1/2
40-1505	Tube K Soft	100 Feet	1/4
40-1515	Tube K Soft	100 Feet	1/2
40-1520	Tube K Soft	100 Feet	3/4
40-1525	Tube K Soft	100 Feet	1
40-1620	Tube K Soft	40 Feet	2
40-1715	Tube K Hard	20 Feet	1/2
40-1720	Tube K Hard	20 Feet	3/4
40-1725	Tube K Hard	20 Feet	1
40-1730	Tube K Hard	20 Feet	1-1/4
40-1735	Tube K Hard	20 Feet	1-1/2
40-1740	Tube K Hard	20 Feet	2



	Code #	Description	Length	Size
 Coils of copper - refrigeration	40-2015	Tube REFRIG	50 Feet	1/8 OD
	40-2020	Tube REFRIG	50 Feet	3/16 OD
	40-2025	Tube REFRIG	50 Feet	1/4 OD
	40-2030	Tube REFRIG	50 Feet	5/16 OD
	40-2035	Tube REFRIG	50 Feet	3/8 OD
	40-2040	Tube REFRIG	50 Feet	1/2 OD
	40-2090	Tube REFRIG	100 Feet	1/2 OD
	40-2050	Tube REFRIG	50 Feet	5/8 OD
	40-2060	Tube REFRIG	50 Feet	3/4 OD
	40-2070	Tube REFRIG	50 Feet	7/8 OD
 Lengths of copper - air conditioning, refrigeration	40-3010	Tube L-ACR	20 Feet	3/8 OD
	40-3015	Tube L-ACR	20 Feet	1/2 OD
	40-3020	Tube L-ACR	20 Feet	5/8 OD
	40-3025	Tube L-ACR	20 Feet	7/8 OD
	40-3030	Tube L-ACR	20 Feet	1-1/8 OD
	40-3035	Tube L-ACR	20 Feet	1-3/8 OD
	40-3040	Tube L-ACR	20 Feet	1-5/8 OD
	40-3045	Tube L-ACR	20 Feet	2-1/8 OD

WALL THICKNESS - WEIGHT PER FOOT

Nominal size inches	COPPER WATER TUBE						DWV COPPER DRAINAGE TUBE		Actual O.D. inches	"ACR"		Refrigeration		
	TYPE K		TYPE L		TYPE M		WALL THICKNESS	WGT. PER FOOT		WALL THICKNESS	WGT. PER FOOT	WALL THICKNESS	WGT. PER FOOT	WGT. PER COIL
	WALL THICKNESS	WGT. PER FOOT	WALL THICKNESS	WGT. PER FOOT	WALL THICKNESS	WGT. PER FOOT								
									1/8	-	-	.030	.034	1.74
									3/16	-	-	.030	.058	2.88
									1/4	-	-	.030	.080	4.02
									5/16	-	-	.032	.109	5.45
1/4	.035	.145	.030	.126	.025	.106	-	-	3/8	.030	.126	.032	.134	6.70
3/8	.049	.269	.035	.198	.025	.145	-	-	1/2	.035	.198	.032	.182	9.10
1/2	.049	.344	.040	.285	.028	.204	-	-	5/8	.040	.285	.035	.251	12.55
							-	-	3/4	.042	.362	.035	.305	15.25
3/4	.065	.641	.045	.455	.032	.328	-	-	7/8	.045	.455	.045	.455	22.75
1	.065	.839	.050	.655	.035	.465	-	-	1-1/8	.050	.655	.050	.655	32.75
1-1/4	.065	.839	.050	.655	.035	.465	-	-	1-3/8	.055	.884	.055	.884	44.20
1-1/2	.072	1.36	.060	1.14	.049	.940	.042	.809	1-5/8	.060	1.14	-	-	-
2	.083	2.06	.070	1.75	.058	1.46	.042	1.07	2-1/8	.070	1.75	-	-	-
2-1/2	.095	2.93	.080	2.48	.065	2.03	-	-	2-5/8	.080	2.48	-	-	-
3	.109	4.00	.090	3.33	.072	2.68	.045	1.69	3-1/8	.090	3.33	-	-	-
3-1/2	.12	5.12	.10	4.29	.083	3.58	-	-	3-5/8	.100	4.29	-	-	-
4	.134	6.51	.110	5.38	.095	4.66	.058	2.87	4-1/8	.110	5.38	-	-	-
5	.160	9.67	.125	7.61	.109	6.66	-	-	-	-	-	-	-	-
6	.192	13.9	.140	10.2	.122	8.92	-	-	-	-	-	-	-	-



Copper Water Tube

Type K (Green)

Type L (Blue)

Type M (Red)

Rated Internal Working Pressures (PSI)

Based on the strength of the tube alone, and applicable to systems using suitable mechanical joints.

Std. Sizes in Inches	Service Temperature. Degrees F.									
	100 (S=6000 psi)			200 (S=5900 psi)			300 (S=5000 psi)		400 (S=2500psi)	
	COPPER WATER TUBE TYPE									
	K	L	M	K	L	M	K	L	K	L
1/4	1060	900	-	1040	880	-	880	740	440	370
3/8	1170	800	560	1140	780	550	960	660	480	330
1/2	920	740	510	900	730	490	760	610	380	300
5/8	760	650	-	740	640	-	630	530	310	260
3/4	880	590	420	860	570	400	730	480	360	240
1	680	510	340	660	490	330	560	420	280	210
1-1/4	550	460	340	530	440	330	450	370	220	180
1-1/2	520	430	340	500	410	330	420	350	210	170
2	450	370	300	420	370	290	350	310	170	150
2-1/2	420	350	280	400	340	270	340	280	170	140
3	410	330	260	390	320	250	330	270	160	130
3-1/2	380	320	260	370	310	250	310	260	150	130
4	370	300	260	360	290	250	300	240	150	120
5	360	280	240	350	260	230	290	220	140	110
6	370	260	230	350	250	210	300	210	150	100
8	390	280	240	380	270	220	320	230	160	110
10	390	290	240	380	270	230	320	230	160	110
12	400	270	240	380	250	230	320	210	160	100

The values in this Table are based on the formula in the American Standard Code for Pressure Piping, ASA B31.1.

CALCULATING THE BURSTING PRESSURE FOR COPPER WATER TUBE; $P = 2Stm/D - 0.8tm$

P= Bursting pressure in psi.

S= Allowable stress in material due to internal pressure at operating temperature, in psi.

t= Minimum wall thickness in inches.

D= Outside diameter in inches. To calculate S, divide tensile strength in psi (30,000 for soft copper; 48,000 for hard copper) by the desired safety factor (5,6,7,10,etc.)